



DRAYTON PARSLOW VILLAGE NEWS



ISSUE 182

June / July 2024

<i>In this issue</i>	<i>Page</i>
Café Church	1
Rector's musings & church services	2
Garden Fete 2024	2 & 16
Garden	3
DP Sports & Social Club	4-5
VPA update	5
Parish Council update	6-7
First Friday Club outing	8
DP History - A walk through Drayton 1798 part 1	9-10
Binfluencer - Calendar of bin collection dates	8
Ads	8-11
Local Listing inc DP Go Green	12

DRAYTON DIARY	
June	
7 Jun	Friday Club, The Three Horseshoes, 2:30pm
8 Jun	Church Garden Fete, Old Rectory 2:30pm
8 - 23 Jun	Bucks Art Weeks - see issue 181
15 Jun	Bingo, DPSSC 8pm
16 Jun	Café Church, DPSSC 10am
24 Jun	PC Meeting, Carrington Room 7:30pm
30 Jun	Village Rounders and BBQ, from 2:00pm (p4)
July	
5 Jul	Friday Club, The Three Horseshoes, 2:30pm
13 Jul	Bingo, DPSSC 8pm
29 Jul	PC Meeting, Carrington Room 7:30pm
Further ahead	
10 Aug	VPA Annual Village Show
17 Aug	Yoga in the garden (see ads section)
5 Oct	VPA Ball (provisional date)

NEXT ISSUE

Contributions, articles and photos for the **August / September** issue by no later than **Friday, July 5th 2024**

please to the Village News mailbox

dpvillagenews@outlook.com or by hand to

Sally Wallis (10 Prospect Close / 720030) or

Andy Darnley (Tamara, 3b Main Road / 720383).



Greenacre Hall (Village Hall)

For hall bookings please telephone Carol 01296 720741

Remember to check the village website for up to date Village News issues and local village walks.

The website is draytonparslowvillage.wordpress.com

Cafe Church

every third Sunday
in the Sports & Social Club
starting 16th June at 10am



Enjoy an informal service with tea, coffee and refreshments while enjoying favourite hymns

Children's activity table and Bible stories

Everyone welcome

Rector's Musings...

All creatures of our God and King, lift up your voice and with us sing....

Having had months and months of rain, it is so good to have had at least 2 days of sunshine so far this spring! Slowly but surely the plants in my garden are also adding colour to my life and bees are out and about!

The rise in temperature has meant that I have taken out my bat detector and spent a few evenings outside trying to discover which bats might live locally!

I am new to bat detecting, having had a few encounters with bats in my previous churches. The first time was when we had just finished cleaning the church and I closed the curtain to the bell tower. I felt a swish but couldn't see anything. Then standing outside the church, the churchwarden stopped and said "Yvonne, I don't want to alarm you, but you seem to have a bat attached on your t-shirt!" Sure enough – there was a little bat. I wasn't very brave, I told him to get it off me while I looked the other way! We carefully placed the bat back in the bell tower and in the morning it had gone, so all was well. A month or two later we were cleaning the church for a wedding when I found another bat hiding in the pulpit. I followed the instructions of the Bat Conservation Trust and made a bat box and scooped it up. Sadly, it was already dead, but having phoned the local Bat group, I was asked to keep said bat in my freezer until they could collect it and identify it! I encountered one more bat before I left that church – this one was outside the church door and as I was busy hoovering the carpet I suddenly realised that I had almost hoovered it up! Once again, my bat box was brought out and we called the local Bat man! He collected the little guy and nursed it until it was strong enough to be released back at the church door!

And that was the start of my journey into learning about bats. They have a very bad reputation but are actually the most incredible creatures!

Having watched several videos by the Bat Conservation Trust I found that I was much less afraid of them and grateful for the part they play in nature. They eat thousands of midges and insects every night which might otherwise destroy our crops. They also pollinate plants like avocado trees, bananas and mangoes and help to spread the seeds of cocoa plants, nuts and figs. And they all have their own song! Each species has a different sound or language – a series of clicking sounds at different frequencies – there are 18 species each with a different "voice" so I need lots of practice as I get to know these wonderful night-time workers!

Psalm 104: How many are your works, Lord! In wisdom you made them all; the earth is full of your creatures.

Rev'd Yvonne Mullins

HOLY TRINITY SERVICE DATES

Date	Time	Service	Rector
2 June	9.30am	Morning Worship	Lay Led
9 June	9.30am	Holy Communion	Yvonne Mullins
16 June	10am	Café Church – Sports & Social Club	Lay Led
23 June	9.30am	Holy Communion	Yvonne Mullins
30 June	11am	Benefice Service at Murley Followed by Benefice BBQ at The Rectory, Mursley	Jane Grimmette
7 July	9.30am	Morning Worship	Jane Grimmette
14 July	9.30am	Holy Communion	Linda Church
21 July	10am	Café Church – Sports & Social Club	Lay Led
28 July	9.30am	Holy Communion	Yvonne Mullins



Holy Trinity Church

Garden Fete

The Old Rectory, Drayton Parslow
with The Giocosso Concert Band
Saturday 8th June 2024 from 2.30pm

Entrance £1 Children Free - No Dogs Please

Stalls, Games, Teas & Pony Rides

We will be collecting tombola and raffle prizes from around the village week commencing 2nd June. Or preferably, donations can be left at any of the following addresses:

17a New Road
1 Prospect Close
Kingsland Barn, Church End

Quality bric-a-brac can be taken to the Old Rectory Garden on the morning of the fete.

Plants, cakes and garden produce welcome.

Thank you for your generosity.

Organised by the Friends of Holy Trinity Church - Email draytonparslowchurch@gmail.com



Your Summer Garden

With many thanks to Gill Gallon

As we enter the summer months the extra light and warmth encourage the garden to put on a huge burst of growth. Herbaceous borders are reaching their early summer peak and the kitchen garden is becoming productive.

Plant of the Moment – Clematis

This is one of the most popular garden plants, they are a great way to add vertical colour to your garden. There are so many varieties to choose from, from fast growing clematis that will quickly disguise unsightly walls and fences to slower growing varieties that can be used in small containers.



They say there is a clematis that flowers every month of the year but the showiest are the summer flowering varieties.

Clematis are generally divided into three main groups.

Group 1 are early flowering and will bloom in the winter or spring on the previous year's growth.

They require little or no pruning. Most evergreen clematis belong to this group and they generally prefer a sunny and sheltered position in the garden. They include Clematis armandii and the vigorous montana's.

Group 2 are deciduous flowering in late spring and early summer, on side shoots arising from the previous year's growth. They can repeat flower in mid to late summer at the tips of the current season's growth. Flowers are generally larger and showier such as the well-known Nelly Moser.

Group 3 is probably the largest group with late-flowering Clematis, including herbaceous clematis. They need hard pruning in early spring as they flower on this year's growth. Well known for their large, showy flowers, there are also many smaller-flowered, viticella varieties. Something for everyone.

And if you don't know which group yours is in, just remember – If it flowers before June – Don't Prune!

Jobs for the garden

1. Prune spring flowering shrubs after the blooms have faded, they will flower next year on the new growth they create this year.
2. Check roses for mildew, aphid, black-spot or other insect or disease problems and if they appear, take steps to control them straight away
3. If you haven't done so yet plant out summer bedding into borders, containers and hanging baskets
4. Remember to feed your containers and hanging baskets weekly with a liquid feed such as Miracle Gro or Tomorite. Dead-head spent blooms regularly
5. Stake tall plants and continue to tie in climbers, such as clematis and sweet pea.
6. Begin to cut the grass regularly and fill in any bare spots by slightly loosening the surface of the soil and sow a good quality lawn seed over the area evenly
7. Pinch out sideshoots on tomatoes and harvest lettuce, radish, other salads and early potatoes
8. Keep on top of weeds by hoeing regularly in dry conditions.
9. Water tubs and new plants if dry but be water-wise. Water borders thoroughly and deeply each time to get to the roots - the opposite of little and often applies.
10. Put straw under the strawberries to keep them clean and dry, net all soft fruit to keep the birds away.



Drayton Parslow Sports & Social Club

**The Recreation Ground, Main Road,
Drayton Parslow, MK17 0JR**

Key dates for your diary

It was great to see so many of you at Race night and Music Bingo recently.

We have lots of fun activities happening over the next few months and we would love to see you there.

Keep your eyes peeled on the village Facebook page for more information about specific events.

COMING UP

Sunday 30 June from 2pm: Village Rounders and BBQ.

Rounders will kick off at 2pm.

BBQ from 4pm (VERY reasonable prices).

We'll be checking on numbers the week before via the village Facebook so we know how many people are interested and how many teams we will have. If you're in a team already, that's great, but if not, you will be able to join one on the day. No dramas! 😊 If you're not on Facebook, just let Cath know if you can make it: 07708 084721.

It doesn't matter if it's your first-time playing rounders or if you are a pro. Everyone is very welcome!

Bingo Dates (Monthly, Saturday Evenings):

Forthcoming dates for bingo are:

- 15th June
- 13th July
- 17th August
- 21st September

As always, all are welcome at Bingo. Eyes down at 8pm!

Mobile Post Office



The Mobile Post Office continues to operate out of the clubhouse on a **Tuesday morning (9.30am – 11am)**, serving all of your Post Office needs.

Regular cards sessions

Whist: Tuesday evenings, 7pm - 10pm.

Abbey Smith Bridge Club:

Thursday Evening: 7pm - 10pm

Beginner Lessons: Friday 11.30am - 1pm

Friday Afternoon: 2pm - 4.30pm



VPA NEWS – VILLAGE SHOW 2024



It's full steam ahead as we get ready for the annual **Village Show on Saturday August 10th.**

Photography classes for this year (so you can start sorting your entries):

Pets – Wildlife – Shadows – Trees - Fetes/Festivals in UK – Yellow – Celebrations – Bridges- Water

Children's classes 6 and under: Flowers – Pets

Age 7-10: Toys - Trees

Age 11-15: Sport - Transport

We would like to see some more people enter the Floral Arrangements section, give it a go you may surprise yourself.

Schedules should be delivered by early July.

Volunteers needed to help out on show day, if you could lend a hand please contact Linda on 07851077684. Thank you

Our evening entertainment after the show this year once again includes the fabulous G-Elvis, there is no charge for this event so come on down and join us.

Let's hope for some good weather for another fabulous show. We look forward to seeing you all there.

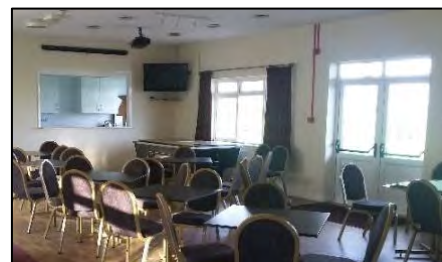
Drayton Parslow Sports & Social Club continued

Please contact Abbey on abbeybridgelessons@hotmail.co.uk or 07891 586410 with any questions you may have about sessions either face-to-face in the club building, or virtual sessions.

DP Sports & Social Club Hall Hire

Subject to diary availability, the clubhouse is available to hire. With a lovely view over the Cricket / Rec ground, we have a large, spacious hall with kitchen, ladies/gents/disabled toilet facilities, Bar facilities, and outdoor space to the rear of the club. Hall Hire charges are fixed at £15 per hour (with an incremental £10 per hour (per bar staff member) if the bar is required. Bar hours will need to include set-up and clearing up time).

A non-refundable deposit and hire agreement form are required for all bookings. Please text Linda Fedoriw on 07851 077684 for hire availability.



PARISH COUNCIL NEWS

<http://draytonparslowparishcouncil.org.uk/> <https://www.facebook.com/groups/DraytonParslowPC/>

Planning - If you wish to receive updates regarding planning matters, please register with the Buckinghamshire Council website where all the latest applications and updates can be found. Within your own profile you will be able to track applications and receive notifications for all applications made within the Parish Boundary. [Registration \(aylesburyvaldc.gov.uk\)](http://aylesburyvaldc.gov.uk)

Contact the clerk via email for a copy of our [How to Register Guide](#)

Allotments



We currently have one vacant allotment if you are interest in a plot please contact the Clerk for details draytonparslowclerk@gmail.com



Buckinghamshire Council Cllr Jilly Jordan attended our recent meeting providing updates a copy of the full report can be found on the Parish Council Website.

[Buckinghamshire Council Updates – Drayton Parslow Parish Council \(wordpress.com\)](#)

Buckinghamshire Best Kept Village 2024

Drayton Parslow has entered this again following last year's 'Merit' award. Judging will take place in June/July so please help make our village look its best.

Marks are awarded in the following areas:

1. Cemetery, graveyard (separate or attached to a place of worship)
2. Green, playing field, children's play area, outdoor recreation facilities, designated nature conservation area
- 3 Floral Displays (hanging baskets, tubs, planters, flower beds etc.)
- 4 Community facilities (Village Hall, Community Centre, Church Hall)
- 5 General environmental features (hedges, verges, ditches, pond, stream, pump etc.)
- 6 Shops and pubs
7. Bus stops, bus shelters, public seating, dog bins, notice boards, information signs
8. War memorial (Please include a photograph if the memorial is inside a locked building)
9. Quality of Competition entry - up to date and detailed map with features highlighted
- 10 Evidence of community engagement (eg website, newsletter, magazine, posters and general community involvement in the Competition)

If you would like to be involved and have ideas on how we could improve our score please contact the clerk by email: draytonparslowclerk@gmail.com

Parish Council Information evening

The parish council hosted an information event in March which was well attended. It is hoped that we will host another to encourage more community engagement with the Council.

Topics discussed at the meeting included:

- the proposed upgrade of street lights to LED
- drainage from the recreation ground is a priority
- safety measures at the crossroads
- neighbourhood plan

Vacancies for Parish Councillor

- Do you want to serve your Community?
- Do you have time or expertise which could benefit your Community?
- Do you want to make a difference to all those around you?
- Are you concerned about your local area?
- Do you want to represent the views of local people?

If so, please contact the Clerk for an application form by email:

draytonparslowclerk@gmail.com

**DRAYTON PARSLOW PARISH
COUNCIL NEEDS YOU!**

**Be
extraordinary**

become a parish councillor today

“Ordinary people
doing an amazing job

Are you passionate about
the local area?

Do you want to make a
difference to the local
community?

Drayton Parslow Parish
Council are seeking new
Councillors

**For more details contact the Clerk
Email: draytonparslowclerk@gmail.com**

Dates for the Diary

Full Council Meetings will be held on the below dates in the Carrington Room Greenacre Hall

24th June 2024	7:30pm	29th July 2024	7:30pm
No Meeting	August 2024	23rd September 2024	7:30pm
28th October 2024	7:30pm	25th November 2024	7:30pm
No Meeting	December 2024		

FIRST FRIDAY CLUB OUTING

On the First Friday of every month everyone is welcome to come down to the Three Horseshoes at 2.30 for tea and cake and a get together. No agenda – it's just for villagers to meet up and spend an hour or so catching up on the latest.



In May we organised an outing to Kingsbridge Farm Garden in Steeple Claydon. Open only by arrangement, Serena Aldous has spent 30 years developing the most beautiful 6 acre garden, helped by and helping people who want to retrain into a new profession – that of gardening. The results are just amazing. The proceeds from visitors are donated to the National Garden Scheme and the Cancer Vaccination charity ICVI.

Sadly, the weather wasn't kind to us, it was cold and damp, but 21 stalwart garden lovers joined us on the visit. Serena made us all feel welcome, lighting the stove to make the reception barn warm and cosy, and telling us some of the history of the garden and recent events such as a tornado and a herd of cows taking over the swimming pool! We were then able to walk round the garden at our leisure before being served a wonderful tea and cakes in the barn.



In spite of the weather, everyone seemed to be enjoying themselves, even suggesting we organise another trip in the autumn. We may not do that one again this year, but there will be more outings for sure!

Why not join us? See you at the Three Horseshoes. 2:30 pm First Friday every month.

Carol Wemyss and Ann Lynch

A Walk through Drayton in 1798: Part 1

By Jeremy Lee

Imagine, it's Sunday 8th July 1798 and you are walking along the road from Stewkley to Drayton. The road is called Potash Lane.

You get to the 'T' junction where Potash House now stands, turn right, onto what was then called Wood Lane, and head towards Drayton. On your left is North Field, one of the three (along with East and South-West Fields) Open Fields of Drayton. On your right is Drayton or Lane's Wood.

You go through a small ford and uphill to where the 'Z' bends now are. In 1798 a lane, known as Bates Lane, went off to the left across to the windmill, that served Drayton (although it was just inside the Parish of Mursley), next to where Mursley Gate now stands. From the windmill the lane continued down into Salden. A little way up Bates Lane from where it left Wood Lane is Emmanuels Cottage and garden. The cottage was probably named after Emmanuel Walduck who died in 1774. Early in 1798, Emanuel's Cottage is occupied by William Bates, but by the July he may already have been moved out by his Landlord, the Lord of the Manor, Charles Greenwood in preparation for Inclosure.

William Bates was one of two farmers of that name in Drayton in 1798 and I'm not sure which one of them lived here. However, neither of them appeared to have owned any land, so they probably rented land from Charles Greenwood. The garden that went with the cottage would have been used for growing vegetables to supplement William and his family's diet.

Continuing along Wood Lane you come to the Rectory. The Rector was William Lord. William took over as Rector from his father, John Lord. John had built the Rectory in 1741. William's younger brother, James, was also probably living at the Rectory and he, in time, would also become Rector. The Rectory was a busy place. The administrative heart of the Parish, at a time when the Parish would have been the main provider of local government - looking after the poor and the road, dealing with law and order and stray animals among other things. In addition our Rectory housed a number of people suffering from mental health problems. A number of villagers were employed to help the Rector look after these patients.

The entrance to the Rectory was then from what we now call Church End, roughly where the Dower House now stands. The Rector's wood yard stood on the opposite side of Church End, where the bungalow opposite the church now is. Looking past, the Rectory entrance, you can see the property now known as The Old Post Office. In 1798 Peter Warren lived there and the garden stretched back as far as the woodyard. Peter was a farm labourer, probably working for William King, the farmer at Kingsland Farm. William King was one of the biggest land owners in the area and probably built Kingsland Farm house. In 1798 the house at Kingsland Farm would have dominated views of the village, although there is no evidence that it was called 'Kingsland' at that time.

The property we know as Cobblestones was already an old house, but it is not clear who was living there. There was a cottage between Cobblestones and The Old Post Office and another one opposite The Old Post Office. The first of these was occupied by John Walduck and the other by William Shillingford. Both were labourers and were living with their wives and young families.

As you walk past the church you might spot the notice that was pinned to the church door this morning, announcing that the award of land that followed the 1797 Inclosure Act for Drayton was finalized and would now come into force, ending the era of the open fields and the common land that had lasted for about a thousand years.

Further down Wood Lane, on the left, just past the church, is Newmans Homestead. This is probably the farmyard of Thomas Bates. Thomas rents the farmyard from Charles Greenwood, and the name probably comes from his father, Newman Bates, who had previously lived here. Opposite a lane (now the bridleway) that provided access to Newmans Homestead and the field beyond, is an old house and garden. The house survived into the early 20th Century when it was known as The Mansion. In 1798 it was occupied by Thomas Wilkins, a labourer, his wife Mary and their young daughters.

A Walk through Drayton in 1798: Part 1 (continued)

Next door to the Wilkins' was the house and close of Benjamin Bligh, the miller who operated the windmill up by the Mursley Gate. He was living there with his wife, Elizabeth, and possibly his son, also called Benjamin (24), who was working with his father at the mill. Opposite the Bligh's property is The Manor. Although Charles Greenwood was Lord of the Manor, he lived in Surrey. The Manor would have been occupied by one of his tenant farmers. I suspect, in 1798, this was James Bevan.

Now imagine you are standing roughly where the War Memorial stands today. Where the Old Bakery now is there would have been three cottages. The three cottages may later have been incorporated into the wing of the Old Bakery that now faces onto Church End. The cottages were owned by John Willis, the Parish Clerk. He would have been one of the most important people in the village. Although the Rector would have been at the head of the administration of the Parish, John would have been the person who did most of the organizing. Under John would have been the Churchwardens, the Overseers of the Poor, the Parish Constable and many other officers of the Parish - all of them villagers, who carried out these duties for a year or so at a time in addition to their day jobs.

I suspect that John may have lived in one of the cottages as they were in an ideal location for the Parish Clerk. The cottages faced onto what was probably the village Pound where stray animals would have been put until their owners came to pay a fine. The road we now call Chapel Lane was then called Pound Lane, and from the Inclosure Map, an enclosure that looks very much like a village pound was sited on the corner of Pound Lane and Church End. To the left of the cottages there was a building standing in the roadway in front the Three Horseshoes. I think this is likely to have been the village lock up (where people arrested by the Parish Constable would await trial) and it may also have housed the village plough (for use by people who couldn't afford a plough of their own).

In 1798, the Three Horseshoes would have been a low, thatched building at right angles to its current position. The gable end of the building would have been roughly where Pub End sits today, and ran back, alongside Pound Lane for some distance. By this time, the Three Horseshoes would also have been involved in the administration of the Parish. It would have been the place where minor court proceedings would have been held and where some village meetings would have taken place. At this time the Landlord of the pub would have been John Perridge, who was living there with his wife Charity and their son Joseph who was 17.

Heading down what is now Main Road, next door to the Three Horseshoes was the home and forge of the village Blacksmith, William Hall. This was almost certainly the same Blacksmith's shop and house that the Chandler family occupied going back at least to the early 17th Century. During the 17th Century the Chandlers had diversified into bell founding and created the bell foundry behind their blacksmith shop, with an access from Pound Lane. The Halls married into the Chandlers and carried on with the bell foundry when the Chandlers gave it up. By 1798, the bell foundry had been closed for nearly 50 years. William's father, also called William, was the last of the Drayton Bellfounders.

Opposite the Blacksmiths, roughly on the site of what is now 13-15 Main Road, would have been some cottages which are effectively built on the highway verge. At that time roads didn't have the clear edges that they do today and it was quite common for houses to be built alongside and even in the roads to avoid taking valuable farmland. It is not clear how many cottages there were, probably two or three, and I do not know who lived there. However, the residents are likely to have been among the poorer villagers and they would have had no garden to grow vegetables.

To be continued



Yoga in the Garden

with lunch

Three Yoga sessions in the beautiful
Manor House Gardens

Drayton Parslow

with Instructor Andrea Meek

10am Saturday 17th August

£45 includes lunch and refreshments

For more information and to book
Email: draytonparslowchurch@gmail.com

Organised by The Friends of Holy Trinity Church
All proceeds for Church Restoration

Be a "Binfluencer"

Calendar of bin collection dates for

June & July 2024

Collection Day		Green bin (Landfill)	Blue bin (Recycling)	Brown bin (Garden)	Food caddy (Food)
Tue	04/06/2024		✓	✓	✓
Tue	11/06/2024	✓			✓
Tue	18/06/2024		✓	✓	✓
Tue	25/06/2024	✓			✓
Tue	02/07/2024		✓	✓	✓
Tue	09/07/2024	✓			✓
Tue	16/07/2024		✓	✓	✓
Tue	23/07/2024	✓			✓
Tue	30/07/2024		✓	✓	✓

Binfluencer
(bin-flu-enc-er):

The person on your street
who always puts their
wheelie bins out first on
bin day and the rest of
the neighbours follow.



Wild
ROSE
FLOWER COMPANY

07876 394 086
wildroseflowercompany.co.uk
[@wildroseflowercompany](https://www.instagram.com/wildroseflowercompany)

**Wildly beautiful, naturally
scented British flowers,
direct from the farm**

Bouquets • Subscription Flowers • PYO
Weddings • Funerals • Events

The Granary Giftshop & Farmgate
We are open on Fridays
9.30am – 4.30pm

Town Farm, Hoggston,
Buckingham. MK18 3LQ



HARLEQUIN
PRESS LTD

Lithographic and Digital Printing

Booklets	Leaflets
Brochures	Letterheads
Business Cards	Magazines
Compliment Slips	Newsletters
Delivery Notes	Note pads
Directories	Order of Service
Draw Tickets	Personal Stationery
Event Tickets	Postcards
Invitations	Programmes
Invoice Books/Sets	Timetables

Friendly Service, Free Advice

Tel: 01908 506722



12 Bacon House Farm • Little Horwood • Milton Keynes • MK17 0PS
E: office@harlequin-press.co.uk • W: www.harlequin-press.co.uk



EMMA HOPKINS

EST. *hair* 2015

Home hair salon based in
Drayton Parslow.

NVQ 3 qualified with 15 years experience.

Product range available.

CONTACT EMMA ON:
07817264808 (CALL/WHATSAPP)
EMMAHOPKINSHAIR@GMAIL.COM

WWW.EMMAHOPKINSHAIR.COM

Paul Eveling

Domestic Electrical Services

All types of domestic electrical

Work carried out.

No call out charges

Free Quotations

Friendly Local Electrician

Part P Approved

**Additional Sockets / Lights, Exterior / Security
Lighting,**

**Fault Rectification, Electric Showers, Fuse Box
Upgrades.**

88 Westbrook End

Newton Longville

Tel Home: 01908 649143

Mob: 07541025351

e-mail paul@evelingelectrical.co.uk

comput@mation
computer support & services

Computer Support for Home & Business Users

Problem Solving:

Virus, spyware detection & removal
Internet & email assistance
Fault diagnostics, repairs & upgrades
Slow running PCs

Services:

Computer support for PCs & Mac
Wireless & wired networking
Data recovery
Install & setup
Health checks

Sales:

Desktops, laptops, printers,
peripherals & software

For friendly advice call John on

M: 07968 536068

T: 01525 261381

john@computamation.co.uk

www.computamation.co.uk

Computamation Services Ltd.

9a Lower Way, Great Brickhill, Bucks. MK17 9AG

Established in 1999 with over 25 years experience

Softscape Horticulture
"The Art of Cultivation"

Local Garden Services

Garden Consultation :

A visit to your garden aimed at those who want to garden themselves but need some guidance. Softscape will explain what you need to do and when and how you do it. Advice includes:

- Plant identification problems and care
- Pruning and training techniques
- Planting advice and more.....

A consultation in your garden - 30 mins £15.00

Annual Contract Garden Maintenance :

From £85.00 per month

Garden Work :

£27.50 per hour

Pruning Lawn Care Border Preparation
Planting Weeding Leaf Clearance
Established 2001

Qualifications:

Royal Horticultural Society
General Examination in Horticulture (2000)
Bsc (Hons) Geography (Exeter) (1997)
IHRS Certificate in Viticulture (2012)

Jon Barraclough
Steeple Claydon, Buckinghamshire

Tel : 01296 738353

Mob: 07950 341399

Email : softscape@hotmail.com



softscape
Horticulture

Dates to note in June and July

From the Buckinghamshire Libraries newsletter:

Volunteers are essential to libraries. They bring skills, enthusiasm, and creativity; and help to promote reading, learning and wellbeing. Volunteering is also rewarding and empowering for the volunteers themselves.

This year marks the **40th anniversary** of the campaign that highlights the importance of **volunteering**.

Volunteers' Week happens between 3-9 June.

We want to send a big thanks to all our library volunteers

The **Summer Reading Challenge** is an annual campaign to encourage children aged 4 to 11 to **keep reading** during the summer holidays, ensuring they are ready for a great start to the new school term in the autumn. This year the Challenge begins on **Saturday 6 July**.

To find out more see:
<https://summerreadingchallenge.org.uk>

Opening Times

Monday	1400 - 1630
Tuesday	1400 - 1630
Wednesday	1000 - 1230
Thursday	CLOSED
Friday	1400 - 1630
Saturday	1000 - 1230

Library Elf is a **FREE** national scheme that helps you to avoid fines when items are due for return or renewal. Sign up here: buckinghamshire.gov.uk/libraries/library-membership/get-email-alerts/

Books: Children's board, picture, chapter, and non-fiction
Teen, Audio, Large Print, Adult Fiction, Non-fiction, Biography
Office: Photocopying, Printing, Internet, Scanning, Laminating
Local Information and Displays

Go to <https://www.buckinghamshire.gov.uk/libraries/> to gain access to the library catalogue and FREE digital resources. Find us on social media at [@wingcommunitylibrary](https://www.facebook.com/wingcommunitylibrary) [@wing_library](https://www.instagram.com/wing_library)



HEADY PLANTS

WE STOCK A WIDE RANGE OF COMPOST, MANURE, BARK, WILD BIRD FOOD, AND PLANTS

CAN BE ORDERED ONLINE AT

www.headyplants.com or

CALL 07986297547 DELIVERED TO YOUR DOOR



Mursley Hall Farm Equestrian Centre

Riding Lessons
for all ages and abilities
Friendly family run business



Liveries available

Contact Jenny 01296 720255
or Jane 07793 749778

MOBILE SPORTS MASSAGE BY

**CB SPORTS
THERAPY AND
REHABILITATION**



Treatments in your home at a time that suits you! Minimal disruption to family or routine. No travel time.

"THE BEST GIFT YOU CAN GET,
IS A HEALTHY YOU!" -
CHRIS BATEMAN

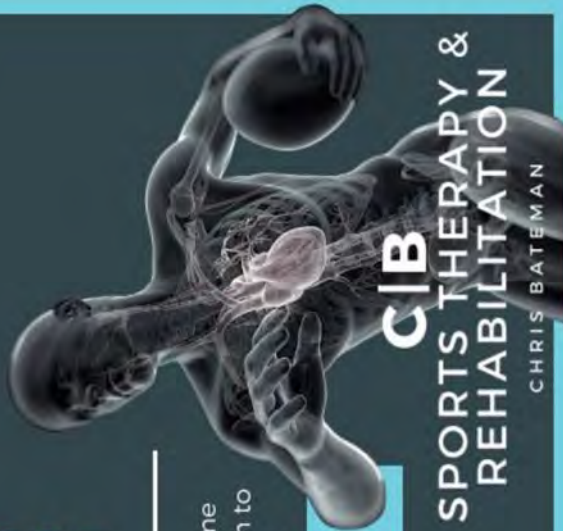
cbsportstherapy.co.uk

cbsportstherapy@gmail.com

07894 081334

**C/B
SPORTS THERAPY &
REHABILITATION**

CHRIS BATEMAN





You look after the kids, we'll look after the lawn

We provide a premium lawn care experience.

We seed them, feed them, even control
the weeds. So, you don't have to.

For a FREE lawn analysis visit
[greenthumb.co.uk](https://www.greenthumb.co.uk) or contact our local team.

Milton Keynes branch

Call 01327 810185 Email miltonkeynes@greenthumb.co.uk

Coming soon on

itv1

Alan Titchmarsh's
GARDENING CLUB

Brought to you by

GreenThumb
LAWN TREATMENT SERVICE

DIRECTORY OF LOCAL SERVICES AND WANTED ADS



BABYSITTING & ODD JOBS

Emily Hunter: 07716 486990
emilyvictoria10@hotmail.co.uk



COMPUTER SERVICES

Comput@mation

Computer support and after-sales services.

John Wallace,

Mob: 07968 536068

Tel: 01525 261381

Fax: 0871 528 4646

john@computamation.co.uk



GARDEN SERVICES

Softscape Horticulture

Garden Consultancy and Maintenance. Border work, mowing, planting & advice. Based in Steeple Claydon.

Call Jon on 01296 738353 or 07950 341399



TUITION

121 Tuition in Maths, Science & English

Maths, Science/Physics:

KS1-4, Also 11+. Qualified 121 tutor with CRB.

Roger Crews 07946 568153 rcrews@btinternet.com



PET SERVICES

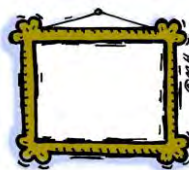
Cat and Small Animal visits available in Drayton Parslow.

I can look after your pet's needs whilst you are away.

References available and fully insured.

Holly Hopton: 07738 767927

holly.hopton28@gmail.com



PICTURE FRAMING

Country Frame

Est 1984, quality framing in Stewkley. Mount cutting, needlework stretching.

Call Paul Body 01525 240163 or 07771 508805

10 Fishweir (off Chapel Square), Stewkley LU7 0HB

Please call before visiting

www.countryframe.co.uk



TREE SURGERY

All aspects of tree and hedge work undertaken. Fully insured and village based.

Contact Graham on 07946 382588.

TO RECEIVE VILLAGE NEWS BY E-MAIL IN COLOUR
CONTACT SALLY dpvillagenews@outlook.com
to be added to the list.

You will still receive a hard copy if you wish, but the e-mail version is available around a week before the printed copy.



DP Go Green



Got anything going spare that other villagers might have a use for? e.g. furniture, topsoil, turf, paint, carpet There's no charge from us if there is no charge from you! Contact us at dpvillagenews@outlook.com

Advertising rates

Please note the new rates which apply from issue 180, revised for the first time in over 15 years due to the increased cost of printing

Classified listing £36 per year

Boxed advert £72 per year (6 issues)

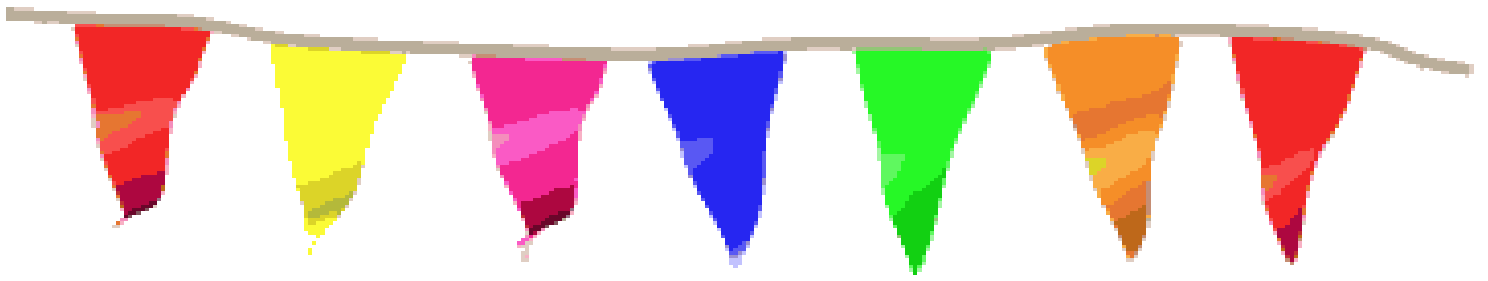
One-off boxed ads £15

For Sale/Wanted items:

£2 DP residents, £4 Non-residents

Please contact Sally on dpvillagenews@outlook.com

We are very grateful for the support of our advertisers and information about village events. However, this does not imply endorsement by the Editors.



Garden Fete

with Live Band

Sat. June 8th

2.30pm

The Old Rectory

Drayton Parslow

Fun for all the family!

Adults £1 - children Free