



DRAYTON PARSLOW VILLAGE NEWS



ISSUE 169

April/May 2022

In this issue...

Feature	Page
30 minutes with...	2
Reflections from the <i>other</i> Rectory	3
Holy Trinity services	3
Church Extension update	3
Parish Council update	4-5
Parish Clerk Vacancy	5
VPA update	6
Local Walks #6	7-9
DP Sports & Social Club	10-11
Mousefest 2022	11
Teas in the hall	11
Wing Antiquarian Society	12
Easter at Holy Trinity	12
Anne Robson Trust	12
Quiz #12	13
Adverts	14-17
Local Services & DP Go Green	18
Pub Stuff	19
Mousefest	20

DRAYTON DIARY

March

19th Bingo – DPSSC

April

1st - 3rd Mousefest, Holy Trinity

1st - 3rd Teas in the hall, Greenacre Hall, from 2pm

9th Bingo – DPSSC

17th Easter Egg Hunting on the Rec ground

Further ahead

May 14th Bingo – DPSSC

June 3rd Coronation Quiz Night, Three Horseshoes

June 4th Queen's Platinum Jubilee

July 17th Summer Concert, DP Singers, Holy Trinity

August 13th VPA Show

Drayton Parslow Singers

The Drayton Parslow Singers are planning to celebrate **Her Majesty Queen Elizabeth's Platinum Jubilee** with a **Summer Concert**.

Hopefully this will take place during the early evening of **Sunday July 17th at Holy Trinity Church**.

Details to follow.

YOUR VILLAGE NEWS NEEDS YOU!



We are very grateful to our usual contributors but would love to have more to share with you.

Please help us to keep your Village News going by sparing a few minutes to send us some content for future editions:

Tell us about future events, your hobbies and interests, reviews of anything you think might be of interest to other villagers (books, movies, TV, places etc), recipes, memories of the village; your answers to the usual '30 mins with' feature etc.

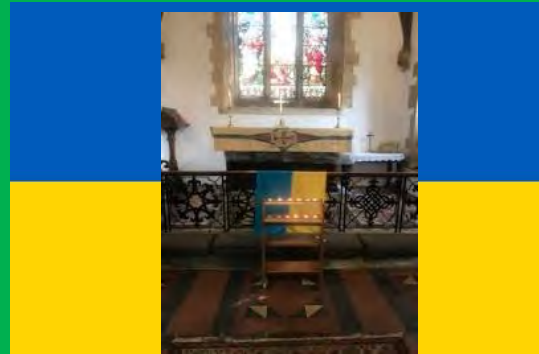
Don't worry about the format: it can be emailed or handwritten; and we can add pictures and sort out the presentation.

NEXT ISSUE

Contributions, articles and photos for the **June/July** issue **by no later than Friday May 6th 2022** please to the Village News mailbox dpvillagenews@outlook.com or by hand to **Sally Wallis (10 Prospect Close) or Claire Darnley (Tamara, 3b Main Road)**.

If you want to speak to either of us, please contact Sally on 720030 or Claire on 720383.

Candles and Prayers for Ukraine at Holy Trinity Church



Let's spend 30 minutes with...

Hannah Bailey



I grew up in a small village in rural Rutland where I spent most of my childhood being either creative and painting or musical, playing the saxophone, piano, guitar and clarinet in various school and local bands. I studied foundation art at Loughborough art college, before moving to Croydon to continue my design studies, specialising in theatre set and costume design.

I met my husband Mark in a club in Stamford in 1997 and have been happily married for 19 years and have two wonderful children, James (15) and Grace (12).

As a busy working mum there isn't much time for hobbies, but I do love to cook and try and keep fit when I can, with my favourite Wednesday activity of dancing around with glow sticks at my regular Clubbercise class. Though I have recently managed to tick off a bucket list item and taken up Fencing, which I have wanted to learn since I was young.....en garde!

1. How long have you lived in Drayton Parslow?

I've lived in DP for 14 years,

2. What do you like best about living in Drayton Parslow?

I love being surrounded by the countryside and being able to put on my walking boots and step out of my front door for a long walk across the fields with the family. There is a great community spirit and I've made some really great friends here and we are blessed with an amazing village school, which both my children attended.

3. What is your favourite event held in the village?

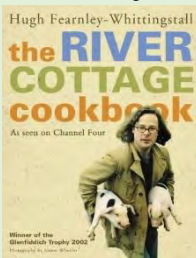
It's a close call between the **Christmas Eve family service** at the church and the **VPA show**. The VPA show is a great family event and we have enjoyed entering various cakes, jams, vegetable animals and lego models over the years. But, I also love singing carols at the church and watching the young children of the village all take part in the Christingle service, it's the real start of Christmas for me.

4. What is your favourite book / books?

I'm a big fan of **Neil Gaiman** and have enjoyed reading most of his books but **Neverwhere** is my favourite. A fascinating read of a man who falls through the cracks of reality into an alternative, darker version of London.



5. Who is your favourite celebrity chef and why?



I loved watching **Hugh Fearnley-Whittingstall's River Cottage** series and have many of his cookbooks. He focuses on healthy and wholesome dishes made with good quality, locally sourced or homegrown ingredients and has a no-fuss style of cooking which has been easy to follow over the years and suits my busy lifestyle.

6. The film you can watch again and again?

Back to the Future. I add a DeLorean to my Christmas wish list every year.....I'm still waiting!



7. What is the best job you ever had?

I worked in **London's west end** for a short stint on a few well known musicals, which was great fun in my early twenties and I met a few stars along the way, but then fell into the world of digital technology and set up and ran my own digital marketing company for over 8 years. It was here that I landed an amazing job of designing and delivering Virtual Reality training solutions for companies including Network Rail, Shell and even the Royal Navy.

8. What is your favourite place to visit?

Locally I like to regularly visit **Stowe** and **Waddesdon Manor** for a walk at the weekends, as I enjoy seeing how the gardens change as the seasons do, but I also try and get to the coast to see the sea and often pop to Southwold and Aldeburgh on the **Suffolk coast** where we have family. Further a field it has to be **La Gomera**, which is the second smallest island of the canaries and somewhere we have visited for a few years as a family and hold dear in our hearts.



9. Who would be your special guests at a dinner?

A rather eclectic mix of people and personalities but I think would make for a rather interesting and lively conversation around the dinner table. I would very much like to hear the stories, insights and experiences of those that over the years have made me laugh, dance, sing and sometimes even cry. **Noel Fielding, Dave Grohl, Tony Curtis, Sue Perkins, Michael J Fox, Tim Minchin, Eddie Izzard, Michael Ball, Will Ferrell and Robin Williams.**





HOLY TRINITY SERVICE DATES

April		
10 th 9:30am	Holy Communion	David Talks
15 th GOOD FRI-DAY	Church Open 3.00 - 400pm for prayer	
17 th 9:30am	EASTER Holy Communion	Jackie Brown
24 th 9:30am	Holy Communion	Jackie Brown
May		
1 st 9:30am	Morning Worship	David Talks
8 th 9:30am	Holy Communion	David Talks
15 th 9:30am	Holy Communion	David Talks
22 nd 9:30am	Holy Communion	David Talks
29 th 10:00am	Benefice Family Communion	David Talks

I don't know what will be happening in Ukraine when you read this issue, or in the rest of the moderate and rational world in reacting to their predicament. There are two things that keep coming to mind for me.

The first is that the sense of 'truth' is rather fuzzy, to say the least, if not inverted. According to the Russian state media, we don't have a war or an invasion, we have a 'military operation' in Ukraine. This sounds unbelievable and even laughable if the situation were not so grave. We see video of parts of Ukraine reduced to rubble in reports from the media of various countries and from private individuals' smartphones. How can that not be true?

The other thought is how wonderful the sacrifice of ordinary families in Poland, Moldova, Hungary, Slovakia and Romania, and countries further distanced like Germany as they take in refugees fleeing across borders. Ordinary folk offering this or that number of accommodation without thought of who they might be welcoming into their homes, at great personal cost.

Very soon it will be Easter when we recall how both truth and sacrifice meet in the person of Jesus Christ of Nazareth. As part of his trial, we hear a military Roman leader by the name of Pilate question him and retort, 'what is truth?' (John 18:38) not realising that he is facing the one who is, 'the way, the truth and the life' (John 14:6).

Whatever state the world is in today or tomorrow, we have this hope set before us: the One who was the very 'truth from above' sacrificed himself that we would have an eternity of being saved from the ravages of the world. And he rose again on Easter morning to prove it. What an offer for us to believe and accept!

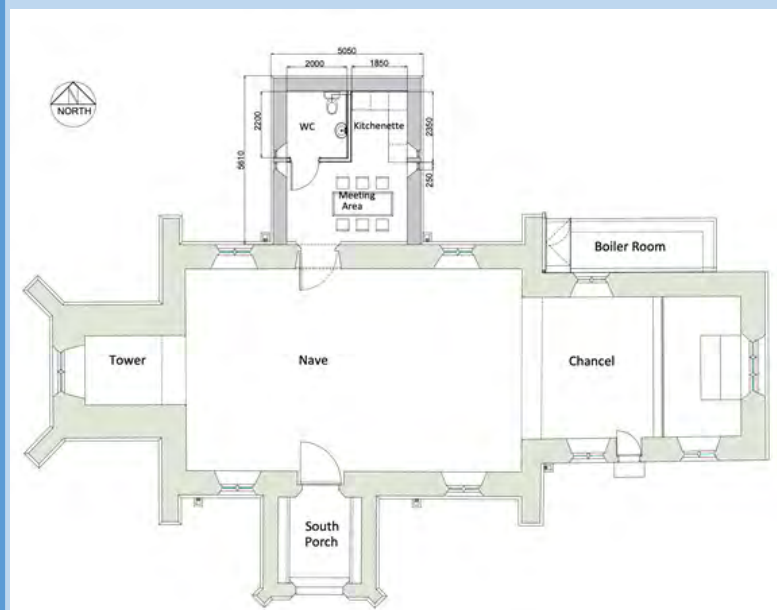
I wish you all a Joyful Easter!

David

Holy Trinity Church – Toilet/Kitchen Extension

We have now raised nearly £112,000 (93%) towards this £120,000 project.

The start of the work has been delayed as had to reapply for planning permission that had expired, but hope to have all approvals in place in March 2022 so we can start work. [A plan of the extension is shown below]



Thank you to everyone who has supported this project.

If you want any more information or can help in any way please contact Wendy Preston (01296 720426).

Parish Council Update

Parish Councillor Vacancy

We are still short of two councillors on the Parish Council. If you want to get more involved with issues concerning the village and to work with our friendly volunteers, please contact the acting Clerk.

Clerk Vacancy

Our Clerk, Susan has resigned her position and so we have a vacancy. Please see the advert on the next page for details of how to apply.

Traffic management

The level of traffic and the speed are continuing matters of concern to the village. The council continues to explore ways to mitigate the effects. It is important to bear in mind that we are constrained by what is financially, practically and legally possible.

We have secured match funding from the local community board for a second feasibility study for traffic management in the village, specifically looking at additional curbing from The Pightle all the way to the bends past the rectory in order to both prevent further erosion of the roadside and also to re-enforce the narrow nature of the road to slow down the traffic.

The Council is beginning the process of considering further measures and we would welcome any constructive suggestions that you have to the Clerk. Any measures requiring significant expenditure or of large scale would require a consensus from the village before proceeding.

Neighbourhood plan

The team working on the plan are in the final stages of preparation before submitting the plan for formal review by a planning inspector following the consultation with the village and various statutory bodies on the draft plan. If we proceed to inspection as we hope, there may be amendments required by the inspector and provided that these are minor we would then expect to move to consultation and referendum. Unfortunately, we are unable to put any timescales on these various stages.

Jubilee celebrations

The council has offered financial support to the residents planning an event in the summer to support the Queen's platinum jubilee and we look forward to a memorable day for all the village to mark the occasion.

Canadian Airforce Wartime Crash

Residents may be aware that seven young men from Canada's No.419 'Moose Squadron' died in a Lancaster which crashed at Drayton Parslow just after 1:30am on 6th March 1945 while returning from a mission in Germany. There is no memorial to their sacrifice and the remains of the crew are interred in various cemeteries in the UK. We would like there to be some form of memorial to the crew in the village and we would like suggestions as to the most appropriate way to do this. Ideas include a plaque, either on or in a building or near the war memorial and the possibility of reading out the crew's names at the remembrance service. Please send any suggestions to the Clerk.

Remembrance

As we are proposing to add a section to the village website commemorating the crash of the Lancaster in our village, we would like to make the section to be more general on remembrance and add the names and biographical information on villagers who have made the ultimate sacrifice in service of our country. Could those with any information please pass it on to the Clerk. Naturally should any family members object we will limit ourselves to the surname and initials as are given on the War Memorial

War Memorial

The Council is arranging for the memorial to be cleaned this year prior to the remembrance service. As in previous years, this will be carried out by specialised contractors.

Continued on next page

How to contact the Clerk: draytonparslowclerk@gmail.com

Parish Council Update continued

CCTV

We will shortly be increasing the coverage of CCTV on the Recreation ground and car park to give us a better level of security across the whole area.

MUGA

We have begun the process of soliciting quotes for a cleaning and general maintenance of the carpet.

Clerk and Proper Officer to Drayton Parslow Parish Council

Due to the retirement of the current Clerk, a position has arisen in the role of Clerk to Drayton Parslow Parish Council.

This is a varied and interesting role which involves working from home as well as attending monthly evening council and occasional committee meetings.

The Clerk, who is also the Proper Officer to the Council is responsible for agendas, minutes, finance, correspondence and general administration and would be encouraged to study for the CiLCA qualification in local government administration if they do not already hold this qualification. An existing qualification in local government procedures would be an advantage but is not essential. Applicants must be computer literate, familiar with Microsoft Office applications and able to manage simple websites and the Parish social media outlets.

A full hand-over will be made and the opportunity to attend training courses relevant to the role will be provided.

This is a salaried position of 30 hours per month with remuneration based upon the 2019-20 NALC recommended pay scales for part-time Clerks (SCP 13-17 depending on experience). There is also a working from home allowance based upon HMRC guidelines. A dedicated laptop is provided.

If you have any questions, please e-mail draytonparslowclerk@gmail.com. CVs should be submitted to the Chairman, David Perry parish@patromark.com

Closing date for applications is 31st March with interviews to take place on 4th April with a start date as soon after as is practical.

Drayton Parslow Parish Council is an Equal Opportunities employer.

VPA Update

Queen's Platinum Jubilee

SAVE THE DATE: Saturday June 4th. The VPA are organising a fun filled day to celebrate the Queen's Platinum Jubilee (funded by the Parish Council).

To start the day there will be a treasure hunt around the recreation ground. Then it's:

- Picnic in the Park with a family entertainer and hopefully some music.
- Royalty themed fancy dress competition, adults and children.
- Talent competition, please register your interest in taking part in this. Let's see what hidden talent we have in Drayton Parslow.
- We also hope to have a big screen on the field to broadcast the BBC coverage of events during the day and evening, including the concert from Buckingham Palace.

Local 2 Chefs 1 Stove will be selling their wares in the evening and the bar in the Sports and Social club will be open.

Times for each event will be posted nearer the date, look out for posters and social media notices.

Come and join the celebrations, we won't have another Platinum Jubilee so let's make it really memorable.

Every child in the village will receive a free commemorative Jubilee medal.

Please contact Linda Fedoriw 07851077684 to register your child for their free medal, or comment on the VPA Facebook page.

We want to decorate the village so we would love you to make a piece of bunting, either one triangle or a whole string, so that everyone can be a part of the celebration. Bunting templates will be available if you need one, finished pieces to be handed to Linda Fedoriw 34 Main Road by 21st May so our team can join it altogether.

We are also hoping everyone will paint a pebble, in a Royal theme and place them around the village. Any pebble will do but if you can't find one suitable, we will have some available to collect from Linda, 34 Main Road.

Other news....,

The team have had a tidy up of the wildflower beds, new seed will be sown soon and hopefully they will be a riot of colour again this year. Thank you to David North for once again taking away all the rubbish.

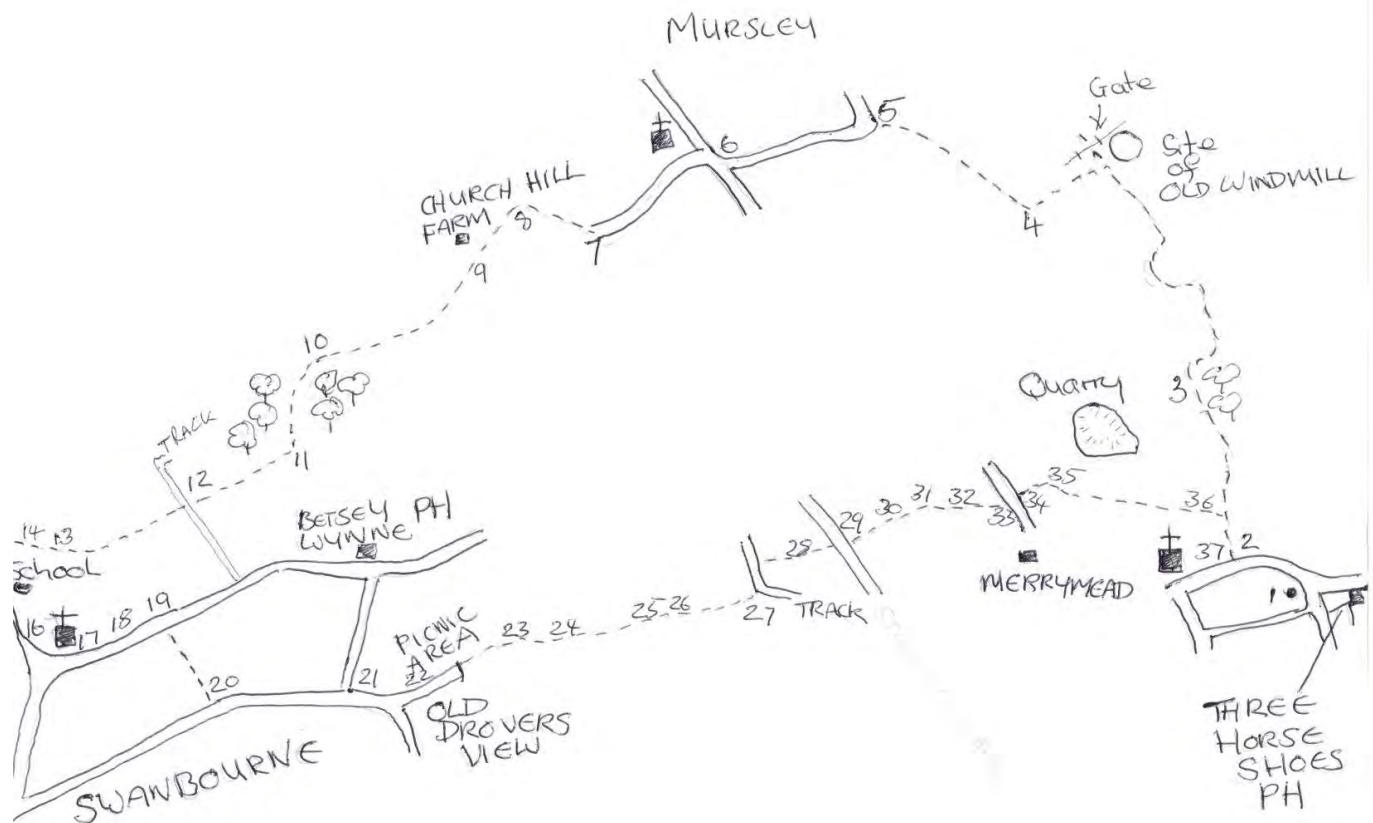
The new daffodil bulbs that were planted are starting to make an appearance, hopefully they will brighten up these cold damp days.

Our village show will be on August 13th this year, every household will receive a schedule by the beginning of July.

This year instead of Best Kept Front Garden the Ralph Walduck cup will be awarded to the Best ,jubilee / royalty themed, decorated house/front garden.

THE VPA TEAM

Jeremy's Walk Number 6: Swanbourne 5.9 miles



As we move into Spring, it's time to go for some longer walks. This is a fairly easy walk and most of it, where it crosses fields, is across land that is usually used for pasture. However, there are some steep steps at the midway point and there are sections which may be muddy after prolonged or heavy rain.

1. From the War Memorial go up Main Road towards the church, passing The Manor on your right.
2. Before you get to the church turn right onto the bridleway, along the tree lined track, and go through the gate.
3. Follow the track straight ahead, past the quarry on your left, and follow it around the copse on your right. Keep to the track until you have nearly reached the gate where the old windmill used to be (on your right). Just before the gate, turn left and walk with the hedge on your right.
4. Keep the hedge on your right and, before you reach the corner of the field, you will see a footpath marker with a stile to your right. Go over the stile, through the hedge, and head diagonally left towards the gate in the far left hand corner of the field.
5. Go through the gate and head straight ahead, down Cooks Lane, into Mursley. Cooks Lane used to be known as Salden Road and was the main road to Newton Longville
6. At the bottom of Cooks Lane cross over Main Street and turn right, towards the church, and then turn immediately left onto Church Lane (the church is now on your right).
7. Follow Church Lane. When you get to a small, wooded area with a stream running through it Church Lane ends and becomes a driveway serving Church Hill Farm. Continue to follow it over the stream and up the hill toward the houses on the ridge. You will see fishing lakes to your left.
8. Just before you reach the houses a footpath comes in from the right and, just after that, there is a footpath to the left. Follow the footpath to the left, through the gate and walk with the houses and buildings to your right and the fishing lakes below you to your left. Head towards the metal kissing gate on the opposite side of the field.

9. Go through the gate and head to another gate, ahead of you on the opposite side of this field. Go through the gate and follow the path as it dog legs right and then left so you cross the field next to the boundary hedge on your right. In the corner of the field go through another gate and continue across the next field with the hedge still on your right.
10. At the end of the field go through the gap in the hedge and shortly afterwards the footpath turns diagonally to the left, heading down hill towards the wood. The path continues going downhill through the wood and over a wide bridge over a stream. Once over the bridge, follow the path up to a gate at the edge of the wood.
11. Go through the gate and turn right, going across the field to another kissing gate.
12. Go through this gate and cross a track before going through another gate into a field. Head straight ahead across the field to a gap in the hedge. Follow the footpath through the gap in the hedge, curving round gently to your left, until you reach another gate.
13. Go through the gate. The footpath marker at this gate is at a bit of a rakish angle and appears to direct you diagonally left. Ignore that. The footpath actually goes straight ahead to a gate you will see on the opposite side of the field. You will see the back of Swanbourne C of E School in front of you and the footpath heads to another gate at the side of the school.
14. Go through the gate and follow the path alongside the school (the school is immediately on your left) until you get to a relatively short, but steep, flight of steps. The steps can look daunting, but they are solid and there is a handrail if you need it. Go down the steps.
15. At the bottom of the steps you reach Station Road. Turn left and walk up a short stretch of road towards the school where you can get onto the pavement. Walk past the school towards the church.
16. As you go past the church note the smaller door within the larger door on the west face of the tower. That's how the bellringers get into the tower. The stone to the left of the door was where the bellringers beer was placed - the vicar had been having trouble with bellringers bringing their beer with them into the tower. You'd never get bellringers doing that sort of thing now. Local legend claims that on Midsummers Eve the stone rolls itself down to a nearby stream to drink water.
17. Turn left into Mursley Road.
18. As you walk along Mursley Road you pass Deverell's Farmhouse which dates back to 1632. The Deverells (there are a variety of spellings) were an important family in Swanbourne until the 19th Century. Major Thomas Deverell was an Officer in the Parliamentary Army during the Civil War, but his house appears to have avoided significant damage when a Royalist force of around 1,200 men raided Swanbourne in 1643 and set fire to many of the houses.
19. Continue along Mursley Road past the shop and the village hall. On the opposite side of the road the verge opens out into a green area with an impressive wall behind it. By the bus stop, cross the road and take the footpath that leads down the side of the wall. The footpath winds down between gardens and paddocks to Nearton End.
20. When you reach the road at Nearton End, turn left onto what used to be known as Layton Road. This was once an important route on the network of Drovers roads used to move livestock around the country. As you walk down the road you will pass Hensmans Farm. In 1941 a low flying German plane fired three machine gun bursts knocking one of the chimney pots off the house.
21. Go past the Tattams Lane on your left and White Hart House. The White Hart was once a Drovers pub (Drovers weren't always welcome in village pubs). Continue along the road ignoring the bridleway/track to your right, which is the old Drove Road, and the development of new houses called Old Drovers View (they would block the view of any Drovers!).

22. Follow the road alongside a small wood on your left. There is a gate into the wood and some picnic tables if you are feeling in need of a rest this is a good place to stop. The road ends at a wooden gate with a footpath marker. Continuing on the footpath, go through the gate, following the path ahead and through another gate into a field. Follow the footpath keeping the hedge on your right.
23. When you get to the corner of the field go through a couple of kissing gates separated by a plank bridge into a farmyard beside a large modern barn. You will see a gate with a footpath diagonally right across the yard.
24. Go through that gate and follow the footpath ahead, keeping the hedge on your right.
25. At the end of the field go through another gate and turn right through yet another and immediately left. Follow the footpath ahead, keeping the hedge on your left and go through a 'kissing gate'. Keep going ahead with the hedge on your left
26. Eventually a wide band of trees blocks the route ahead. Go right and then immediately left through a gap in the hedge and then go forward with the trees now on your left.
27. Once across the field you come to a track. The track goes ahead, curving round to the right and left, through a gate, towards Mursley Road. Turn left through the gate and then immediately right through a kissing gate. The path winds round a small copse before heading across the field towards another kissing gate.
28. Go through the kissing gate and you will see a gate on the opposite side of the field, which is where you are heading. When I walked across here at the beginning of March this field had just been ploughed. Therefore, rather than head straight across the field, I turned right and walked around the wide, grassed, field margin. It's longer, but easier than getting half a ton of Buckinghamshire clay on your boots.
29. When you get to the gate, go through it onto Stewkley Lane and cross over to the driveway of the farm on the opposite side of the lane. Walk up the driveway towards the green chicken sheds and go over the stile to the left of the gate. Continue up the driveway, past the chicken sheds and over another stile.
30. The driveway ends as you go up a short rise toward a hedge. At the hedge, turn right and then go over a stile, in the corner, to the left into a field.
31. Once in the field keeping to the hedge on your right head towards a gap in the hedge on the opposite side of the field.
32. The line of the footpath isn't always clear once you're through the gap. You need to head at a slight angle to your right. The ground rises in front of you, but you should be able to see the roof of Merrymead Farm ahead, as well as some trees, spaced out along the Mursley Road. If you aim for the 2nd tree to the left of Merrymead as you head up the slope, when you crest the rise, you should be lined up with a gap in the hedge/access place.
33. When you reach the gap in the hedge, go through and cross over Mursley Road to the footpath sign on the opposite side of the road (slightly to the right of the gap you've just come through).
34. When you get to the footpath sign you'll see a stile in the hedge. Go over the stile into the field and follow the hedge on your left, past the site of the old 'Castle' mound.
35. In the left-hand corner of the field go over the plank bridge into Great Ground and head diagonally left (keeping to the right of the old quarry). When I walked across here in early March there were sheep in Great Ground, in which case you need to follow the hedge to the right and go round the edge of the field.
36. When you reach the gate on the bridleway, near the church, go through the gate and follow the bridleway out to Main Road.
37. Turn left and head down the hill to the War memorial.



Drayton Parslow Sports & Social Club

The Recreation Ground, Main Road, Drayton Parslow, MK17 0JR

Easter Egg Hunting on the Rec ground (Easter Sunday)



We are delighted to confirm that the **Easter Egg hunt** will be running again this year (on Easter Sunday). Starting from the clubhouse at 12:30pm, the children set off across the Rec ground to hunt the elusive eggs that the Easter Bunny may have hidden. It is free to take part in our Egg Hunt, all children are welcome to participate. The annual **Egg Raffle** will also be running, with a chance of winning a full-sized chocolate Easter Egg. Please pop into the clubhouse to participate.

Sunday Sessions



Our Sunday sessions continue to be popular, both with our regular Dominoes players and with families socialising and using the pool table (free to use) and our growing collection of board games. As always, all are welcome, the clubhouse is open every Sunday lunchtime (12noon-2.30pm)



We are still collecting Membership fees for 2022

DPSSC operates as a Members' club, and fees for 2022 Membership are now due (membership runs Jan-Dec). Membership Fees are £2 per person for the year (£5 for a family). We very much appreciate everyone's support in becoming members – not only does it help us maintain our licence (which is a valuable addition to events such as the VPA show and Cricket, as well as those who regularly use our clubhouse), the membership fees help us pay our essential fixed costs such as Public Liability Insurance.

Fees have to be paid in person so people are more than welcome to pop in on a Sunday lunchtime whilst the bar is open, or any other time if they attend sessions within the club (Bingo, Whist, Bridge etc). Just leave an envelope with the money and their names on either behind the bar if it's open or slide under the shutter.

Mobile Post Office



The Mobile Post Office continues to operate out of the clubhouse on a **Tuesday morning (9.30am – 11am)**, serving all of your Post Office needs in a socially-distanced, well-spaced, secure way.



Bingo Dates (Monthly, on Saturdays):

Forthcoming dates for bingo are:
19th March, 9th April, 14th May, 18th June, 23rd July 2022
As always, all are welcome at Bingo

Regular cards sessions

Whist: Tuesday evenings, 7pm - 10pm.

Abbey Smith Bridge Club:

Thursday Evening: 7pm - 10pm

Beginner Lessons: Friday 11.30am - 1pm

Friday Afternoon: 2pm - 4.30pm



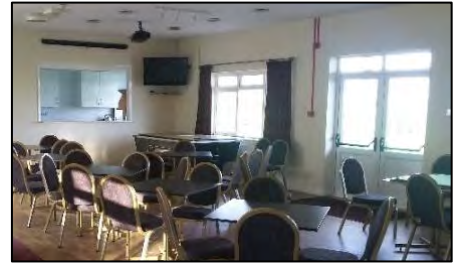
Please contact Abbey on abbeybridgelessons@hotmail.co.uk or 07891 586410 with any questions you may have about sessions either face-to-face in the club building, or virtual sessions.

Drayton Parslow Sports & Social Club

The Recreation Ground, Main Road, Drayton Parslow, MK17 0JR

Hall Hire

Subject to diary availability, the clubhouse is available to hire. With a lovely view over the Cricket / Rec ground, we have a large, spacious hall with kitchen, ladies/gents/disabled toilet facilities, Bar facilities, and outdoor space to the rear of the club. Hall Hire charges are fixed at £15 per hour (with an incremental £10 per hour (per bar staff member) if the bar is required. Bar hours will need to include set-up and clearing up time). A non-refundable deposit and hire agreement form are required for all bookings. Please text Linda Fedoriw on 07851 077684 for hire availability.



Mousefest Weekend 'Once Upon a Time'

Following our first Mousefest in 2018 we are pleased to announce that the Mice are back and Mousefest 2022, 'Once upon a time', promises to be quite a showstopper!

Our Mousefest Weekend features all your favourite story and panto scenes! A unique exhibition of over 300 hand crafted mice is guaranteed to make you smile!

Please visit us at Holy Trinity Church
Fri-Sun 1st-3rd April, 1.30-5.30pm
Admission £4 Children £1 (under 5's free)

*All mice will be available to purchase and proceeds from sales will go to the charity **Children with Cancer UK**, based at Great Ormond Street Hospital. Money raised will help fund vital research to save the lives of children with cancer and keep families together.*



TEAS IN THE HALL

Fri-Sun 1st-3rd April from 2pm

Pop along to **Greenacre Hall** for tea and some delicious homemade cake anytime over the weekend.

- Free squash and craft table for children
- Second-hand books

We look forward to seeing you.

Proceeds to Holy Trinity Church Restoration Fund (cash payments preferred).



THE WING ANTIQUARIAN SOCIETY

Was founded 41 years ago, currently has 110 members, many of which for various reasons, are now unable to manage trips that the Committee arrange, so there is now an opportunity for new members to join.

Ideally you would need to be recently retired or be able to take a weekday off.

Yearly membership is £12.00 (non profit making). All necessary communication is by email.

A Committee of eight organise a day coach trip to six varied places of interest each year, plus an annual Sunday AGM along with Afternoon Tea and a Speaker.

For all trips you would board a morning Coach at Cublington Cricket Club and be returned back there.

The first three trips for 2022 have been arranged and are:

5th of May The National Memorial Arboretum, Staffordshire

14th June Barnsdale Gardens , Rutland

7th July The Gurkha Museum, Winchester

If you are interested and would like further information, please do contact John or Wendy Preston on 720426 or prestons759@icloud.com

Easter at Holy Trinity

The Church will be open from 3-4pm for quiet reflection, lighting of candles and prayer on Good Friday 15th April.

We celebrate Easter Sunday with a

Holy Communion Service at 9.30am.

We hope you can join us.



Anne Robson Trust Pre-bereavement Helpline

The Anne Robson Trust is a pre-bereavement charity that passionately believes that **"no one deserves to die alone"**.

We work alongside NHS hospitals to train volunteers, who sit with patients in the last days and hours of their life to provide company and companionship, so they know they are not alone. However, due to COVID restrictions the volunteers were unable to visit hospitals, and in response to this, we set up a free, **National Helpline** so that we could continue to offer comfort and support where needed. As restrictions have lifted the volunteers are gradually starting to return to hospitals and in addition the introduction of the helpline is showing to be a valuable resource for anyone in the community to access support from the comfort of their own home.

The helpline is for anyone who is struggling to cope with a **terminal diagnosis or the imminent death of someone they care about**. Whether they are family members, friends, neighbours, work colleagues, or even a member of the care staff who may just need someone to talk to; we understand the pressures of working and caring for people who are end of life. We are fully committed to ensuring that people facing end of life and their families have access to as many layers of support as possible.

No One Deserves To Die Alone

We are here to support you

Call our Helpline: 0808 801 0688

Quiz Time #12 with thanks again to Susan Piddock

- Which explorer sailed in the 'Santa Maria'?
- How many winks does each player have in the game of Tiddlywinks?
- What was the Egyptian god of the dead and the underworld?
- Which is the closest to London – Paris or Dublin?
- Which of the tropics lies immediately to the north of Cuba?
- The area known as Zuider Zee is associated with which country?
- What is a tansy?
- After hydrogen, what is the second most abundant element in the universe?
- Varicella – is the technical term for which disease?
- What sort of bird is a Yaffle?
- What is kelp?
- In an Olympic Triathlon, competitors have to swim 1.5 kilometers and run 10 kilometers – in between they have to cycle for how many kilometers?
- Which star took home the three top prizes - artist, song and album of the year at the Brit Awards 2022?
- What is found in the middle of a Sussex Pond Pudding?
- In 1066, before the battle of Hastings, King Harold fought a battle which shares its name with a famous football ground. What is it?



1	1	H Hydrogen 1.008	2	He Helium 4.0026
2	3	Li Lithium 6.941	4	Be Beryllium 9.0122
3	11	Na Sodium 22.990	12	Mg Magnesium 24.305
4	19	K Potassium 39.098	20	Ca Calcium 40.078
			21	Sc Scandium 44.956



(Answers below)

Answers to quiz on this page:

- | | | | |
|-----|------------------|----|--|
| 15. | Stamford Bridge | 7. | A herb |
| 14. | A lemon | 6. | The Netherlands |
| 13. | Adele | 5. | Cancer |
| 12. | 40 kilometers | 4. | Paris (Paris is 213 miles and Dublin is 288 miles) |
| 11. | Seaweed | 3. | Anubis |
| 10. | Green woodpecker | 2. | 6 |
| 9. | Chickenpox | 1. | Christopher Columbus |
| 8. | Helium | | |



LET'S CREATE THE LAWN WE BOTH LOVE

SAVE UP TO

30%

ON OUR ULTIMATE
PROGRAMME*

SAVE UP TO

18%

ON OUR STANDARD
PROGRAMME*

*Save up to 30% with our Ultimate Programme and up to 18% with our Standard Programme when you pay by Direct Debit.

PREPARE YOUR LAWN NOW

Autumn is a very important season for your grass. Lush green lawns in spring don't just appear overnight, the preparation starts now.

Revolutionise your lawn with annual machine work paired with our unique **Spring Ready Treatment** applied from January - working wonders across the nation's lawns.

EVERY LAWN BENEFITS FROM MACHINE WORK

Lawns have a natural build-up of thatch. Thatch creates an environment irresistible to moss.

Aeration and **Scarification** reduce thatch, thus reducing moss. **Simple!**

Annual machine work is essential for a healthy lawn. Autumn and spring are the best times of year for your grass to benefit from **Aeration & Scarification**. Our **Spring Ready Treatment** will then be waiting patiently for the optimal weather conditions before releasing its nutrients onto your lawn at the best possible time.

FROM JUST

£15

PER TREATMENT**

**Based on 5 core treatments
with a lawn size
of 40m²

Book your machine work in today - your lawn will thank you for it!

Join our nation of Lawn Lovers today:

Call: 0908 850545

Email: miltonkeynes@greenthumb.co.uk

Visit: greenthumb.co.uk

GreenThumb
LAWN TREATMENT SERVICE





BLUE HORSE BIKES

**Bike Sales & Servicing
Parts and Accessories
Bikes Wanted**



Technical 2 Qualified

Whether you are just getting back into cycling, or are a regular cyclist, we offer a range of servicing, on site or mobile. Repairs using quality parts at our workshop in Drayton Parslow, as well as stocking a range of good quality used bikes, including Giant, Trek, Specialized, Ridgeback, Frog, Islabike and more....

07464 171032

www.bluehorsebikes.co.uk

info@bluehorsebikes.co.uk



Exquisite Cleaning
We take pride in your home

FOR ALL OF YOUR DOMESTIC CLEANING

YOUR LOCAL STEWKLEY BASED COMPANY

CHOOSE FROM WEEKLY OR FORTNIGHTLY

FULLY INSURED

ALL STAFF POLICE CHECKED

ALL CLEANING MATERIALS PROVIDED

CONTACT CHRIS STEVENITT FOR MORE INFORMATION ON:

OFFICE: 01525-242042

OR

MOBILE: 07850-540393

EMAIL: chris@exquisitecleaning.co.uk

www.exquisitecleaning.co.uk



**Indoor and outdoor
lighting**

New fuse board

Additional sockets

New power supply

Full rewires

Fire alarms

Smoke detectors

Perodic testing

CCTV

All work guaranteed.

PART P approved

No job too small

Call: Craig 07968 152 709

Email: cajelectrical@hotmail.co.uk



Lakeview Lodge Care Home

At Lakeview Lodge, our care is the kind we would want all of our loved ones to receive. If you're concerned about how your relative is coping and would like them to have more support, our highly trained team offer family-led care in a luxurious and homely environment. Our staff and residents have had the Covid-19 vaccine and anyone who joins us at Lakeview will be offered the same, allowing them to live safely and as they wish.



01908 641 200



Elba Gate, Newton Leys, Bletchley,
Milton Keynes, MK3 5QU



www.countrycourtcare.com



Our family, caring for yours

Mursley Hall Farm Equestrian Centre

**Riding Lessons
for all ages and abilities
Friendly family run business**



**Contact Jenny 01296 720255
or Jane 07793 749778**



**HARLEQUIN
PRESS LTD**

Lithographic and Digital Printing

Booklets	Leaflets
Brochures	Letterheads
Business Cards	Magazines
Compliment Slips	Newsletters
Delivery Notes	Note pads
Directories	Order of Service
Draw Tickets	Personal Stationery
Event Tickets	Postcards
Invitations	Programmes
Invoice Books/Sets	Timetables

Friendly Service, Free Advice

Tel: 01908 506722



12 Bacon House Farm • Little Horwood • Milton Keynes • MK17 0PS
E: office@harlequin-press.co.uk • W: www.harlequin-press.co.uk

MOBILE SPORTS MASSAGE BY

**CB SPORTS
THERAPY AND
REHABILITATION**



Treatments in your home at a time
that suits you! Minimal disruption to
family or routine. No travel time.

**"THE BEST GIFT YOU CAN GET,
IS A HEALTHY YOU!" -
CHRIS BATEMAN**

cbsportstherapy.co.uk

cbsportstherapy@gmail.com

07894 081334

**CIB
SPORTS THERAPY &
REHABILITATION**

CHRIS BATEMAN

Dave Reid

Property Repairs &
Alterations

Fully Qualified Carpenter
kitchen & bathroom upgrades
staircase conversions
replacement doors
general maintenance
small building work

07939 146630

davereid935@btinternet.com

based in Soulbury



KENNELS & CATTERY LTD.

- Viewings welcome during opening hours - no appointment necessary
- All breeds accepted
- Heated kennels
- Medication given at no extra cost
- All diets catered for
- All kennels and runs are undercover
- Outdoor exercise pens and grass enrichment areas for off lead exercise
- Doggy day care
- Small animal boarding, including rabbits, guinea pigs, ferrets, birds and micro-pigs
- Full veterinary cover on all animals at no extra cost
- Vet approved
- Vet on call
- Waggys on-site Grooming Parlour for residents and non-residents
- All animals fully insured whilst in our care
- Vaccinated animals only- Titre Tests and homeopathic vaccines accepted
- Pet taxi service available at minimal charge
- Stockists of Arden Grange, Burns, JWB, Canigen and other hypoallergenic diets plus raw food.

TELEPHONE: 01908 372004

www.villiersfarm.co.uk

info@villiersfarm.co.uk

Based at:
Villiers Farm, Drayton Road, Stoke Hammond,
Milton Keynes, MK17 0ED

comput@mation
computer support & services

Computer Support for Home & Business Users

Problem Solving:

Virus, spyware detection & removal
Internet & email assistance
Fault diagnostics, repairs & upgrades
Slow running PCs

Services:

Computer support for PCs & Mac
Wireless & wired networking
Data recovery
Install & setup
Health checks

Sales:

Desktops, laptops, printers,
peripherals & software

For friendly advice call John on

M: 07968 536068

T: 01525 261381

john@computamation.co.uk

www.computamation.co.uk

Computamation Services Ltd.

9a Lower Way, Great Brickhill, Bucks. MK17 9AG

Established in 1999 with over 25 years experience

Paul Eveling Domestic Electrical Services

All types of domestic electrical
Work carried out.

No call out charges

Free Quotations

Friendly Local Electrician

Part P Approved

**Additional Sockets / Lights, Exterior / Security
Lighting,
Fault Rectification, Electric Showers, Fuse
Box Upgrades**

88 Westbrook End

Newton Longville

Tel Home: 01908 649143

Mob: 07541025351

e-mail paul@evelingelectrical.co.uk

Softscape Horticulture "The Art of Cultivation"

Local Garden Services

Garden Consultation :

A visit to your garden aimed at those who want to garden themselves but need some guidance. Softscape will explain what you need to do and when and how you do it. Advice includes:

- Plant identification problems and care
- Pruning and training techniques
- Planting advice and more.....

A consultation in your garden - 30 mins £15.00

Annual Contract Garden Maintenance :

From £85.00 per month

Garden Work :

£27.50 per hour

**Pruning Lawn Care Border Preparation
Planting Weeding Leaf Clearance
Established 2001**

Qualifications:

Royal Horticultural Society
General Examination in Horticulture (2000)
Bsc (Hons) Geography (Exeter) (1997)
IHRS Certificate in Viticulture (2012)

**Jon Barraclough
Steeple Claydon, Buckinghamshire**

Tel : 01296 738353

Mob: 07950 341399

Email : softscape@hotmail.com



softscape
Horticulture

DIRECTORY OF LOCAL SERVICES AND WANTED ADS



BABYSITTING & ODD JOBS!

Georgia Darnley 07851 644864

Emily Hunter: 07716 486990
emilyvictoria10@hotmail.co.uk



COMPUTER SERVICES

Comput@mation

Computer support and after-sales services.

John Wallace,
Mob: 07968 536068
Tel: 01525 261381
Fax: 0871 528 4646

john@computamation.co.uk



GARDEN SERVICES

Softscape Horticulture

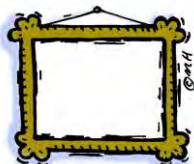
Garden Consultancy and Maintenance. Border work, mowing, planting & advice. Based in Steeple Claydon. Call Jon on 01296 738353 or 07950 341399



TUITION

121 Tuition in Maths, Science & English

Maths, Science/Physics:
KS1-4, Also 11+. Qualified 121 tutor with CRB.
Roger Crews 07946 568153 rcrews@btinternet.com



PICTURE FRAMING

Country Frame

Est 1984, quality framing in Stewkley. Mount cutting, needlework stretching.
Call Paul Body 01525 240163 or 07771 508805
10 Fishweir (off Chapel Square), Stewkley LU7 0HB
Please call before visiting
www.countryframe.co.uk



PAINTER AND DECORATOR

A TOUCH OF PAINT

Michael is Back Working in the Village!
Your ex-Drayton postie is back to painting and decorating.

Contact me for your painting jobs. All painting jobs considered – Big or small.

PERFECTION IS ALWAYS GUARANTEED

Give me a call for your free quote.

Michael Vincent 07715 276046

atouchofpaint@btinternet.com



TREE SURGERY

All aspects of tree and hedge work undertaken. Fully insured and village based.

Contact Graham on 07946 382588.

TO RECEIVE VILLAGE NEWS BY E-MAIL IN COLOUR
CONTACT SALLY dpvillagenews@outlook.com

to be added to the list.

You will still receive the hard copy as well, but the e-mail version is available around a week before the printed copy.

Advertising rates:

Classified listing £30 per year

Boxed advert £60 per year (6 issues)

One-off boxed ads £12

For Sale/Wanted items:

£2 DP residents, £4 Non-residents

Please contact Sally on dpvillagenews@outlook.com

We are very grateful for the support of our advertisers and information about village events. However, this does not imply endorsement by the Editors.



DP Go Green



Have you got anything going spare that other villagers might have a use for? e.g., furniture, topsoil, turf, paint, carpet

There's no charge from us if there is no charge from you!

Contact us at dpvillagenews@outlook.com

Pub Stuff

South Downs Way 50 mile ultra in memory of Dave and Barrie



In January 2021 we lost two of the funniest and most charismatic people I've been fortunate enough to know. Both of them were able to walk in the pub and create a party. They will be forever missed by everyone who was lucky enough to have known them.

I'm going to be running the **South Downs Way 50 mile ultra** in memory of Dave and Barrie.

I will never forget the way they would both look at me aghast at my running while telling me what an idiot I was! and asking 'why would you want to do that?'

Please help me to raise money for **MIND**, there is a sponsorship form in the Pub and I have a just giving page -

<https://www.justgiving.com/fundraising/steve-sharrock1>

Dave, Barrie, This one's for you.

Thanks, Steve Sharrock



The Three Horseshoes
01296 720296

Coronation Quiz Night

Friday 3rd June 7pm



*Adults £5 per head to include Coronation buffet
Children most welcome*

You may even win a prize!

Please book by Monday 30th May

Saturday Night Curry Menu



This Photo by Unknown Author is licensed under [CC BY-NC-ND](https://creativecommons.org/licenses/by-nc-nd/4.0/)

Chicken Madras

Thai Green Chicken

Chicken Tikka Masala

Served with Pilau or Plain rice

And Naan bread

Eat in £9.95 or Takeaway £8.50

To Book please call 01296 720296

Mousefest Weekend

'Once upon a time'

Holy Trinity Church

Fri-Sun 1st-3rd April

1.30 - 5.30pm

A new and amazing
festival with over
300 mice!



Adults £4 Children £1 (under 5's free)

Children must be accompanied by an adult

Teas in the Hall

Teas, book stall and children's craft
table in the Village Hall from 2pm